

LINEN WEAVES

TWILL WEAVE—A BROKEN TWILL	PAGE 2
HUCK WEAVE—BASIC HUCK BLOCKS	PAGE 3
HUCK WEAVE—PENNSYLVANIA HUCK STRIPES	PAGE 4
PENNSYLVANIA HUCK STRIPES CONTINUED	PAGE 5
M'S AND O'S	PAGE 6
M'S AND O'S—4 SHAFTS—"PLAID"—A TYPICAL PATTERN.	PAGE 7
BARLEY CORN WEAVE—"HIGHLANDER'S DELIGHT"	PAGE 8
OVERSHOT WEAVE—PATTERN—"WHIG ROSE"	PAGE 9
BRONSON LACE WEAVE—INDIANA HEDGE ROSE	PAGE 10
FOUR SHAFT LACE WEAVE—PATTERN—"DOTTED SWISS OR LACE"	PAGE 11
DOUBLE -FACED TWILL—BASIC BLOCKS OF DOUBLE-FACED TWILL	PAGE 12
DOUBLE-FACED TWILL & "DAMASK"	PAGE 13
DOUBLE-FACED TWILL & "DAMASK"—"WHIG ROSE VARIANT".	PAGE 13
CRACKLE—PATTERN "THE PINES"	PAGE 16
FOUR SHAFT LENO WEAVE—"BEAD-LENO"	PAGE 17
EIGHT SHAFT—BRONSON POINT.	PAGE 18
EIGHT SHAFT NOVELTY TWILL	PAGE 19

LINEN WEAVES

TWILL WEAVE—A BROKEN TWILL

WARP PLAN:

40/2 White Linen for **warp**. (This may also be for weft but a “singles” is better.)

20/1 or 16/1 for **weft**.

White is excellent. Natural is “traditional”. Peach, pink, light green, maize or aqua are modern.

12/1 Slub natural is like homespun and is traditional.

#15 reed threaded at 2 th. per dent—30 th. per inch.

363 = No. of th. in warp.

12" ÷ = Width of warp in reed.

THREADING PLAN:

A—B = 8 th. x 45 repeats = 360 th.

B—C = 1 repeat = 3 th.

363 th. divided by 30 = 12 1/10"

WEAVING PLAN:

This is a one-shuttle weave. There are various ways of weaving this pattern. Any overshot tie-up will give all of the harness combinations needed.

The material made with #1 is excellent for blouses or table cloths or towels. Used with bobbin lace made with 40/2 linen, the towels are especially pretty.

Repeat any one of the three treadlings as desired.

WHEAT PATTERN



LINEN WEAVES

HUCK WEAVE

WARP PLAN:

Linen for both warp and weft is preferable for huck. In the **old** line N. S. “singles” was often used for both warp and weft. Later, when cotton was available it was used for warp. The linen was, of course, hand-spun.

40/2 white linen—for warp

8/1 or 10/1 white linen—for weft (try both)

8/1 tow, 8/1 natural, 10/2 natural & “bouclin” natural would also be worth trying for weft. For a modern touch try 10/2 *pastels*, for weft.

Use **either** #15 reed at 3 th. per dent = 45 th. per inch or #20 reed at 2 th. per dent = 40 th. per inch.

553 = No. of threads in warp

12 ½" = width of warp set at 45 th. per inch or

13 7/8" = width of warp set at 48 th. per inch (preferable.)

THREADING PLAN:

A—B = 2 th. x 1 repeat = 2 th.

B—C = 18 th. 30 repeats = 540 th.

C—E = 11 th. x 1 repeat = 11 th.

553 divided by 45 = 12 1/3" or 553 divided by 40 = 13 7/8" wide.

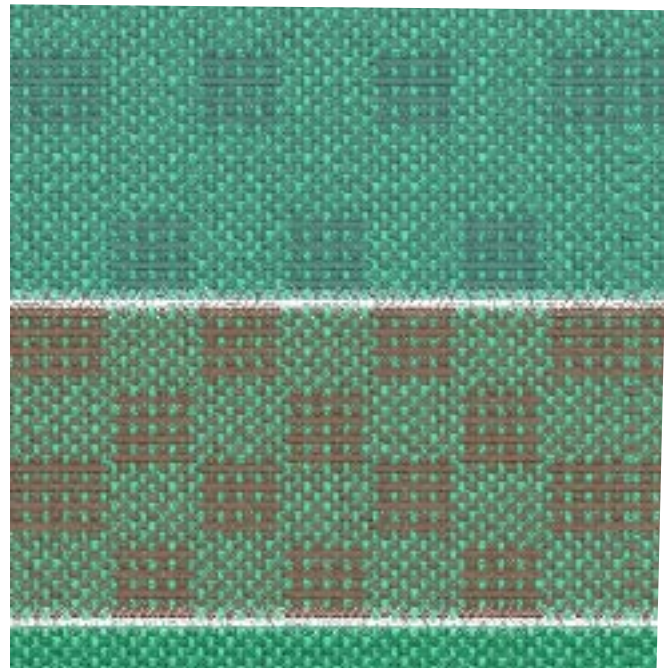
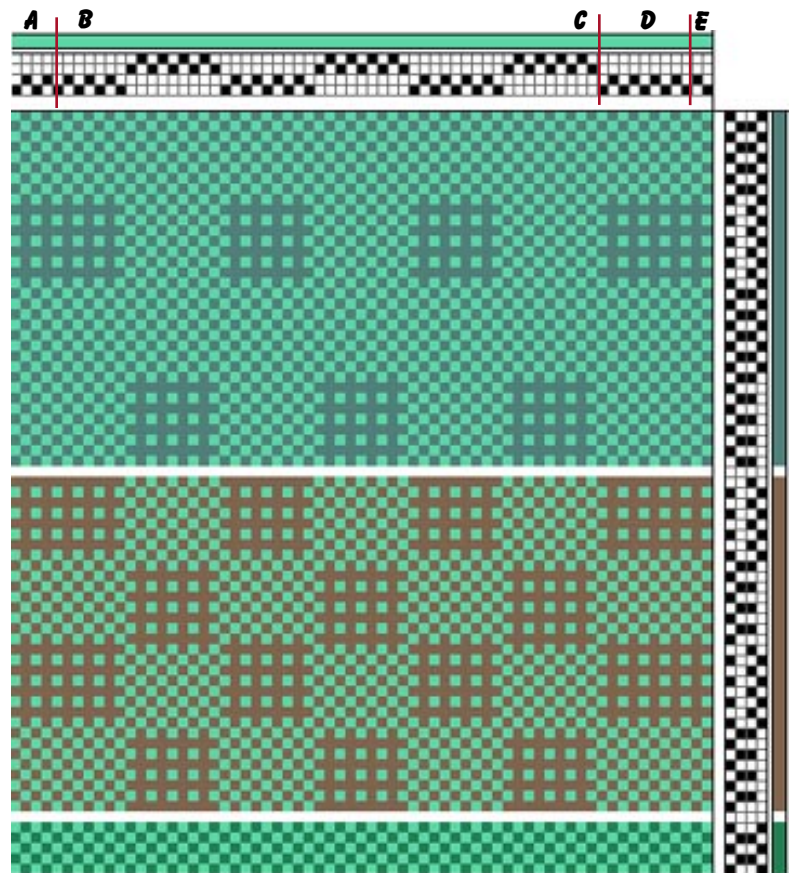
WEAVING PLAN:

This is a one-shuttle weave.

Note: Each block should be square. 10/2 may take only 7 shots instead of 9 for both pattern and tabby.

Tabby areas should be the same size as pattern blocks.

BASIC HUCK BLOCKS



LINEN WEAVES

HUCK WEAVE

WARP PLAN:

Linen is preferable for both warp and weft tho' cotton was often used for one. "Singles" linen was used chiefly—set at 40 th. per inch.

40/2 white linen—for **warp** or 24/3 white cotton for **warp**.

#15 reed at 2 th. per dent.

398 threads in warp = $13 \frac{1}{4}$ " = width of warp in reed or **#20 reed at 2 th. per dent.** 542 th. in warp = $13 \frac{1}{2}$ " = width of warp in reed.

Choice of **weft**: 8/1 —tow, grey (very typical), or natural, or *white*. 10/1 —natural or white.

THREADING PLAN:

A—B = 4 th. x 1 repeat = 4 th.

B—C = 72 th. 5 repeats = 360 th.

C—E = 34 th. x 1 repeat = 34 th.

398 th. divided by 30 = $12 \frac{1}{4}$ " width or

A—B = 4 th. x 1 repeat = 4 th.

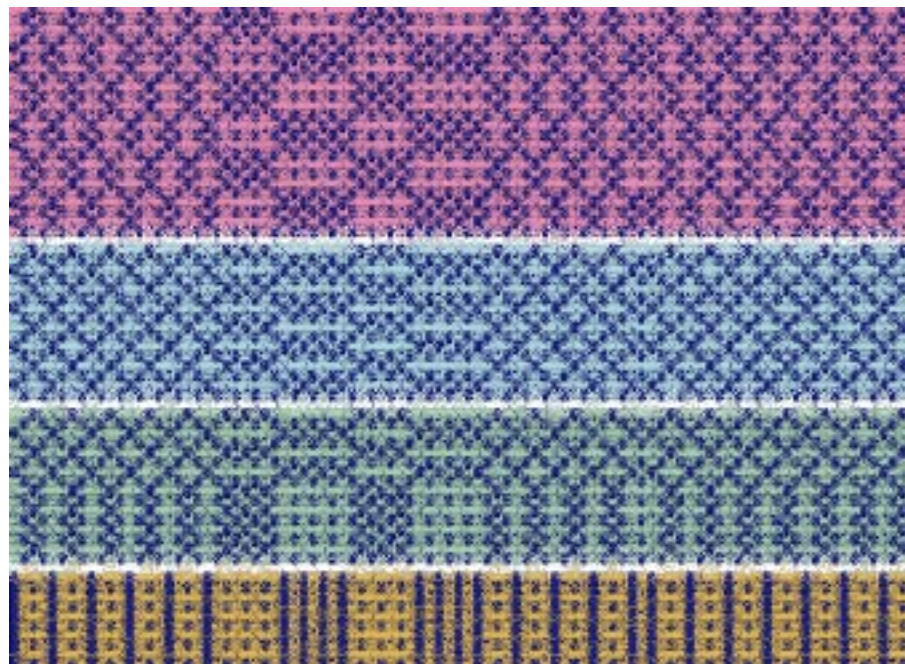
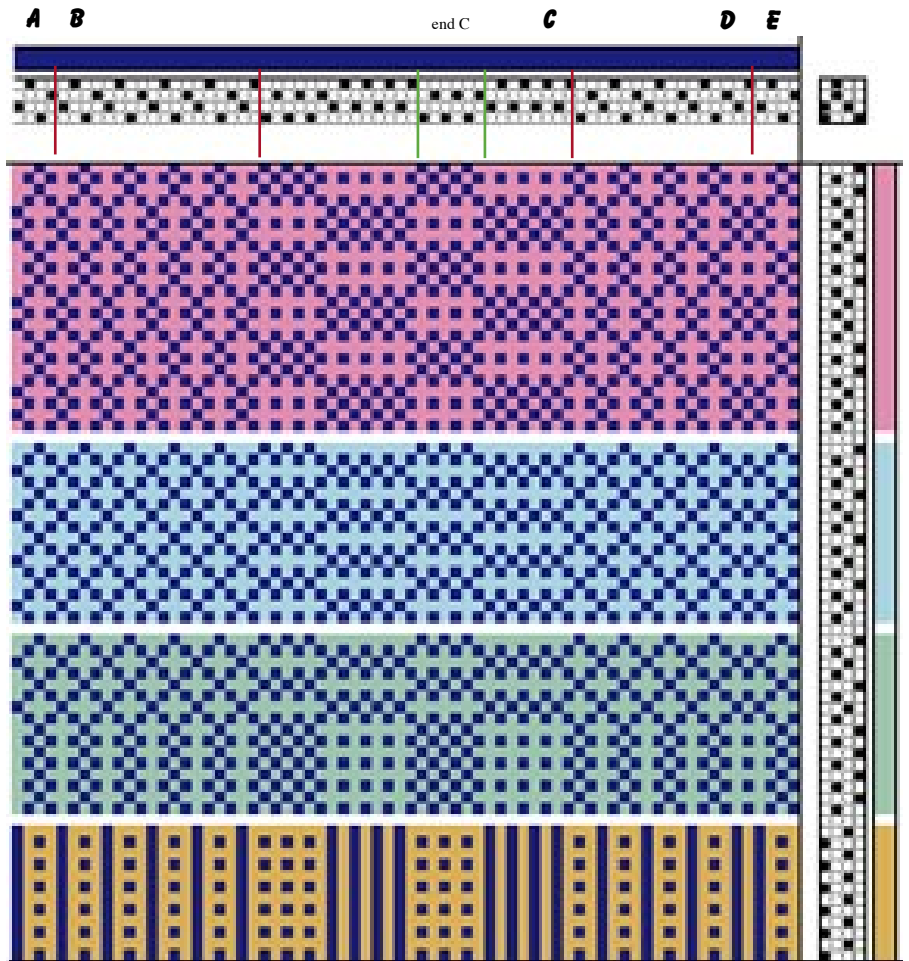
B—C = 72 th. 5 repeats = 504th.

C—E = 34 th. x 1 repeat = 34 th.

542 th. divided by 40 = $13 \frac{1}{2}$ "

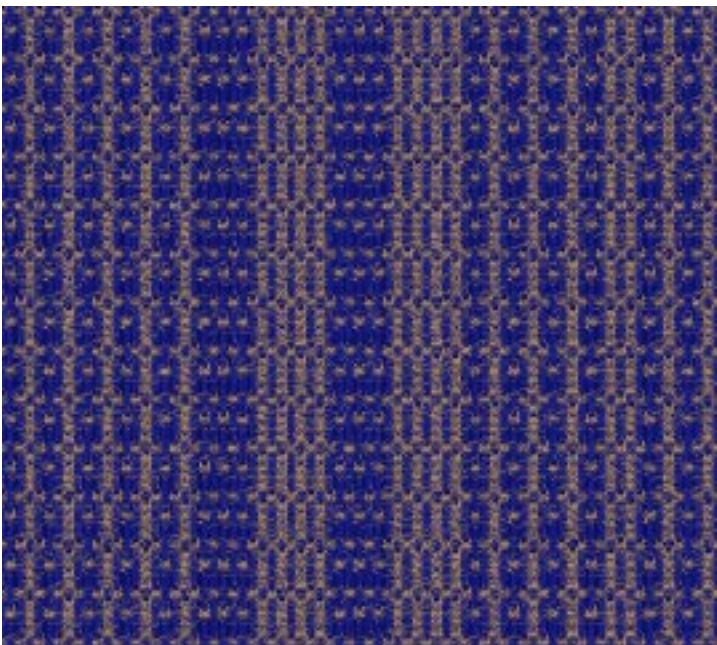
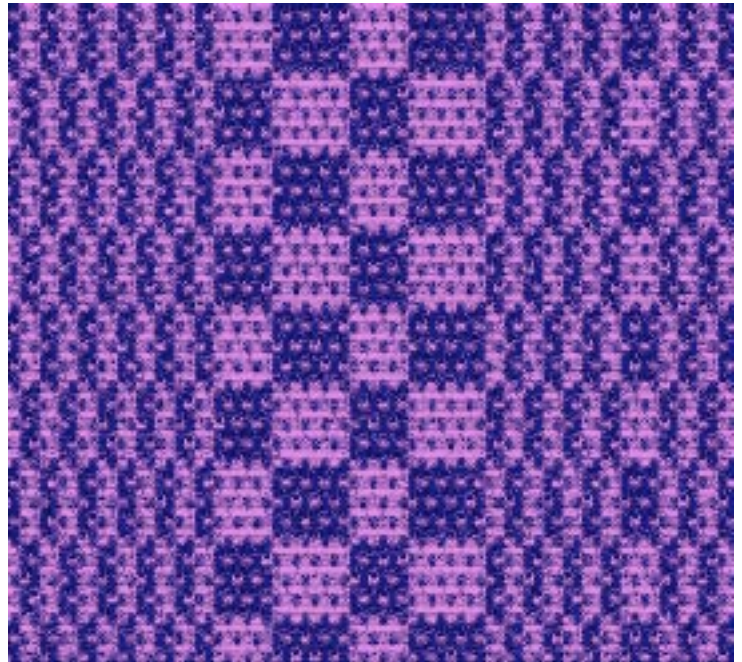
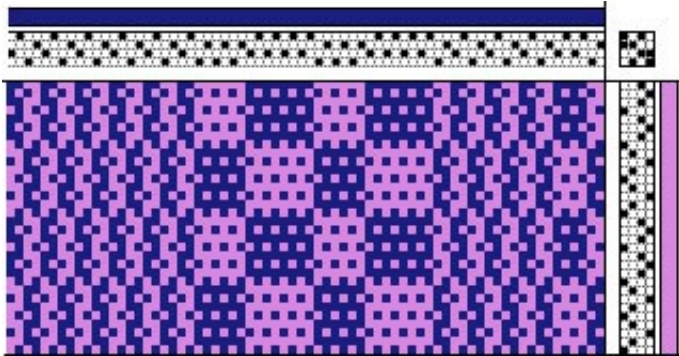
width

PENNSYLVANIA HUCK STRIPES



LINEN WEAVES

PENNSYLVANIA HUCK STRIPES CONTINUED



LINEN WEAVES

M'S AND O'S—4 SHAFTS

BASIC BLOCKS OF M'S & O'S

WARP PLAN:

Linen for both warp and weft is essential in weaving towels or table linen in M's & O's. The other factor which is essential for producing superior weaving in M's and O's is to have the warp set closely in the reed.

40/2 white linen (or 50/2 or 50/3) for **warp**.

16/1 or 20/1 white linen for **weft**.

572 = No. of threads in warp.

14 1/3" width of warp in reed.

#20 reed at 2 th. per dent—40 th. per inch.

THREADING PLAN:

A—B = 2 th. x 1 repeat = 2 th.

B—C = 16 th. 35 repeats = 560 th.

C—E = 10 th. x 1 repeat = 10 th.

WEAVING PLAN:

There is no true tabby, as such, in M's and O's weaving.

Alternate the weaving of "**A & B**."

End on the "**A**" block.

Blocks containing more than 2 units are best woven so that they look like real tabby.

A—B = Block A (treadling) 3x

B—C = *(Block B 1x, Block A 1x) 2x, Block B 1x (5 blocks in all)

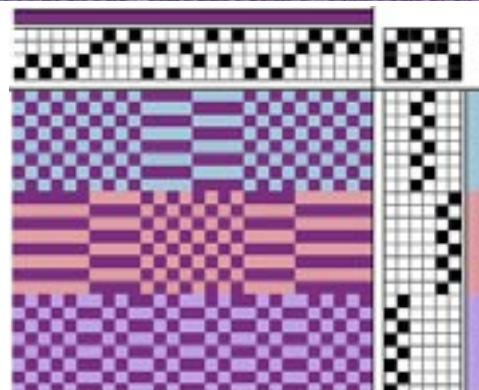
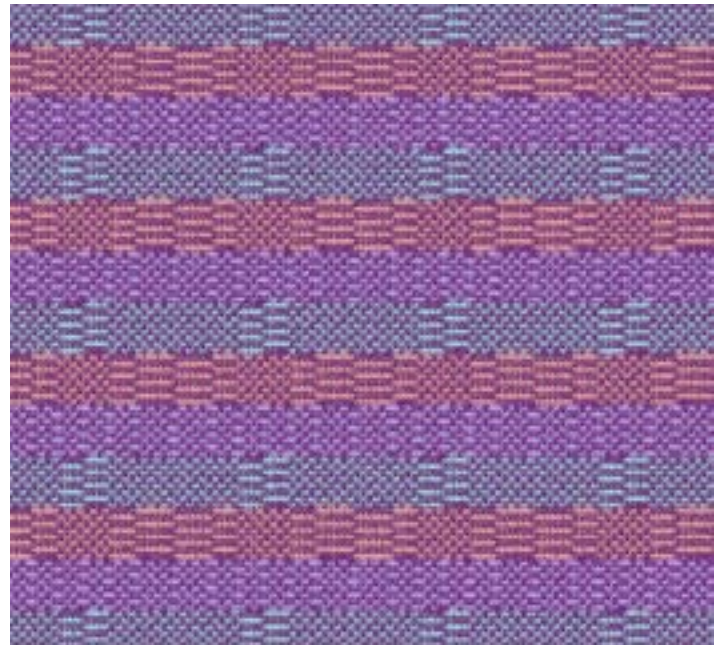
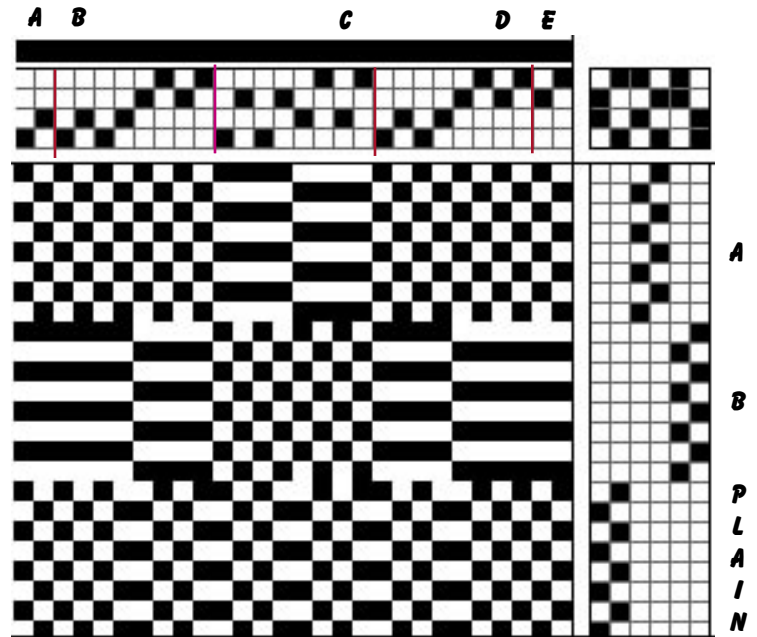
Block A 5x*. Repeat *—* 6x (or required length)

Block A 3x

Weave a towel with plain weave hems and an all-over "checkerboard" pattern.

If you weave the 1 & 2 and 3 & 4 (etc.) for Block "**B**", you will reverse the areas of plain & patterned blocks.

To understand the block structure of M's and O's, weave a small sample with 2" long vertical stripes for both "**A & B**" blocks.



LINEN WEAVES

M'S & O'S—FOUR SHAFTS

WARP PLAN: (Read note on M's & O's on "Basic blocks", page 5)
 40/2 white linen for warp. (Pastels are also good)
 16/1 or 20/1 white or pastel linen for weft.
 #20 reed threaded @ 2 th. per dent. (40 th. per inch)
 568 = No. of threads in warp
 14 1/5" width of warp in reed.

THREADING PLAN:

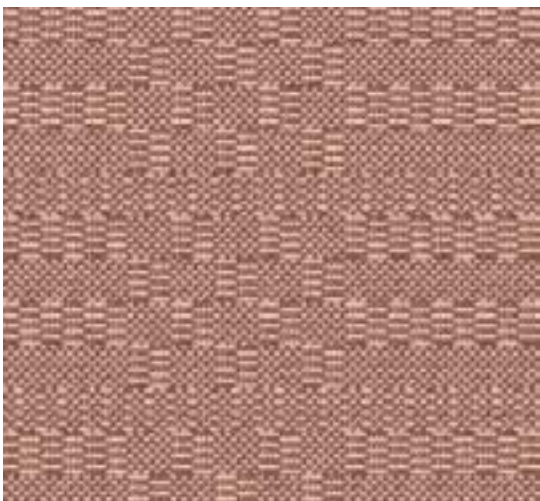
A—B = 24 th. x 1 repeat = 24 th.
B—D = 80 th. x 6 repeat = 480 th.
B—C = 40 th. x 1 repeat = 40 th.
A—B = 24 th. x 1 repeat = 24 th.

WEAVING PLAN:

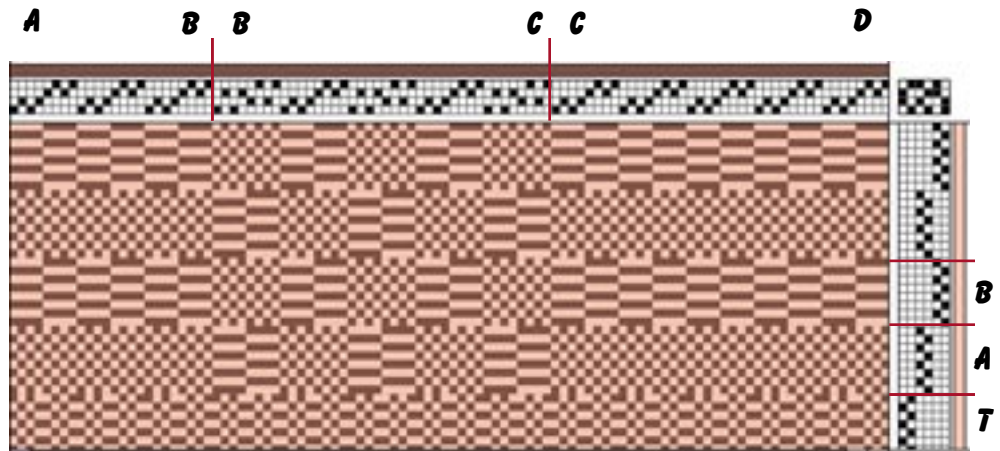
This is a one shuttle weave. There is no true tabby, as such, in M's and O's weaving.

Plain Weave—this may be used for hems. Alternate 1 & 4 and 2 & 3.

Pattern—This is a **plaid** design and as in all plaids the design is best when each block is squared. Each unit of M's & O's contains 8 threads and each unit must be woven with 8 shots of weft. To square a block with 5 units would thus require 40 weft shots.



"PLAID"—A TYPICAL PATTERN



a) Method A

Blocks

containing more than 2 units are best woven so that they look like real tabby.

Follow draft: **A—B** = {1&3, 2&4, 1&3, 2&4, 1&3, 2&4, 1&3, 2&4}3x

B—C = {1&2, 3&4, 1&2, 3&4, 1&2, 3&4, 1&2, 3&4} x1 {1&3, 2&4, 1&3, 2&4, 1&3, 2&4, 1&3, 2&4}1x
 x2 {1&2, 3&4, 1&2, 3&4, 1&2, 3&4, 1&2, 3&4} x1
 (This follows the 5 blocks of **B—C**) = like **A—B** but x5 (not x3)

Repeat **B—D**, 6x—or till you have woven length you need.

Next repeat **B—C**, 1x (all of it with repeats)

Next repeat **A—B**, 3x (just as given above.)

Pattern—"Lacy M's and O's." (This method is applicable only to large pattern blocks as "**C—D**" on page 5.)

Weave the same shaft combinations given in **A—B**, but after each group of 8 shots has been woven on 1 & 3 and 2 & 4, throw just 2 shots on 1 & 2 and 3 & 4—(1 shot over and 1 back.) Do this in **C—D** after the 1st 4 repeats. The large block will then have a more interesting appearance. But if you wish to keep the traditional M's & O's look, do not use it.

To form the plaid design alternate blocks and weave to the desired depth to square off the design.

LINEN WEAVES

BARLEY CORN WEAVE

COMPARE WITH BRONSON WITHOUT LACE

"HIGHLANDER'S DELIGHT"

M. DAVISON—1950

WARP PLAN:

Warp: 40/2 white linen.

Weft: 10/1 (colors if desired)
or 16/1 white, natural or colors.

Tabby either 40/2 or 20/1.

#15 reed threaded @ 2 th. per
dent = 30 th. per inch.

436 = No. of threads in warp

14 1/2" width of warp in reed.

THREADING PLAN:

A—B = 12 th. x 1 repeat = 12
th.

A—E = 72 th. x 5 repeats =
360 th.

A—D = 64 th. x 1 repeat = 64
th.

436 th divided by 30 = 14 1/2"

WEAVING PLAN:

1. **Tabby** = color of warp

(either
40/2 or 20/1.)

The tabby
shafts are 1
and 2-3-4. For
each unit of 4
threads, there
are 2 tabby
shots and 2 pat-
tern shots.

2. Pattern:

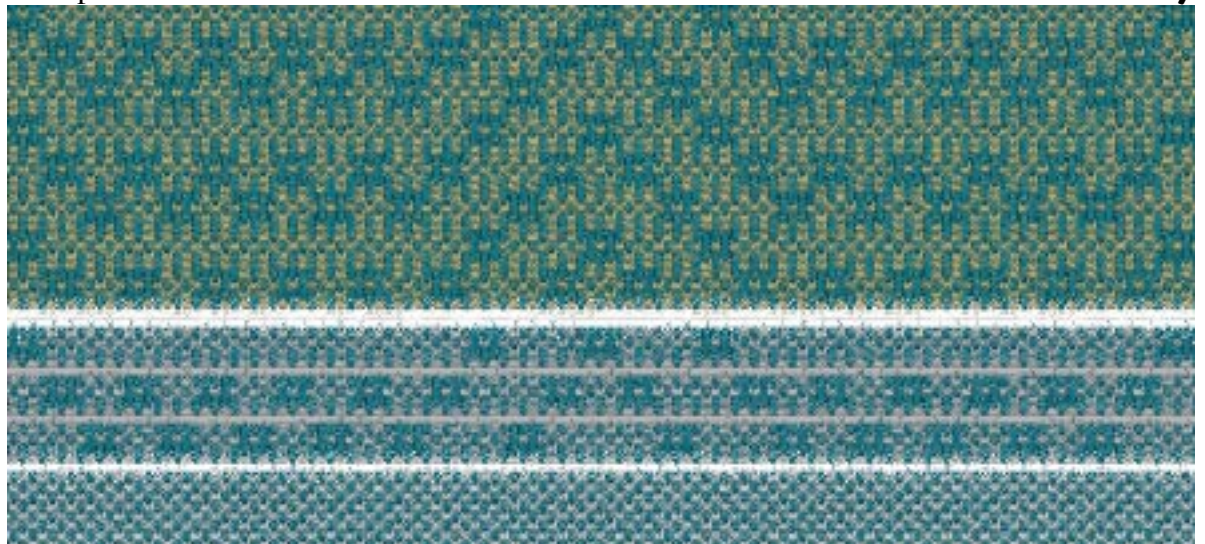
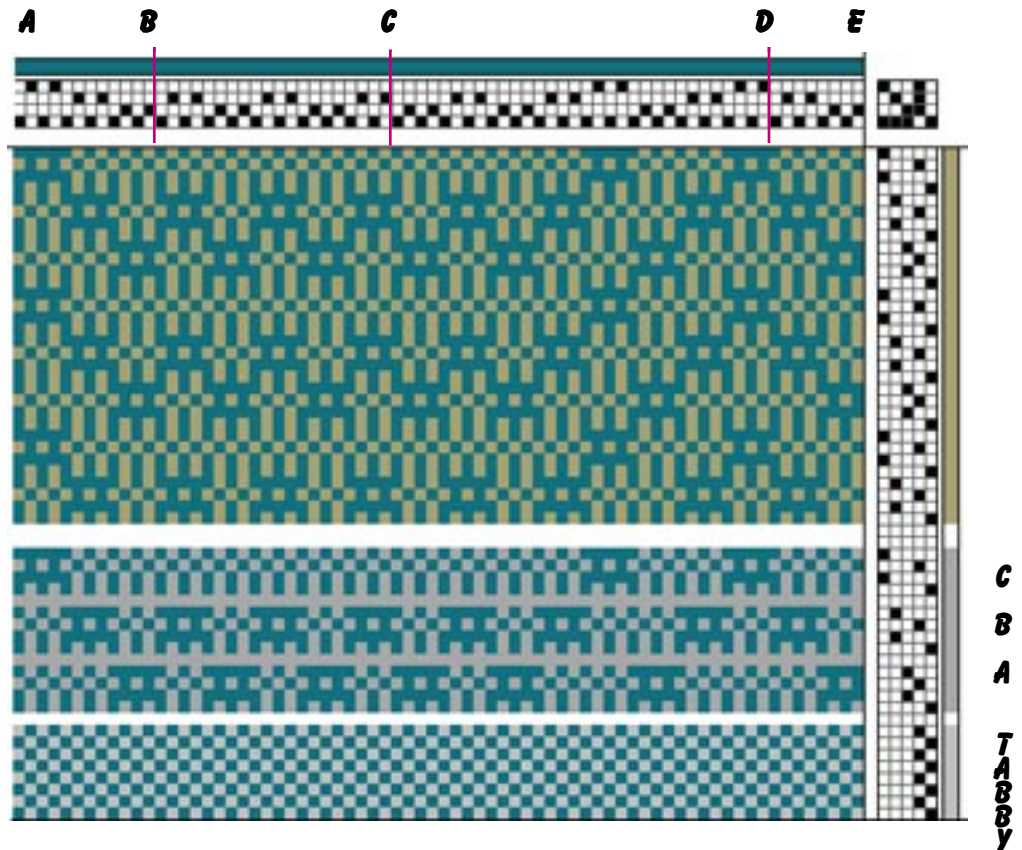
There are 3
different pattern
blocks in this
draft.

The 1st is written on shafts 1 & 2

The 2nd is written on shafts 1 & 3

The 3rd is written on shafts 1 & 4

*Each block acts as a tie-down block for the adjacent
blocks.*



The 1st block is woven (numbers mean shafts)

The tabby may also be used for hems for towels.

They may be white or in color—matching or con-
trasting with the rest of the towel.

LINEN WEAVES

OVERSHOT WEAVE

PATTERN—"WHIG ROSE"

WARP PLAN:

This plan is from an ancient N.Y. overshot table cloth with cotton warps & linen weft.

Warp = Clark's 6-cord, O.N.T. #50 sewing thread (400 yd. spools) (If you must have linen, use 40/2 *white*.) (10 spools for 5 yd. warp & weft.)

T. Weft = Like warp.

Patt. Weft = 16/1 or 20/1 linen in white or pastels.

#20 or @25 reed threaded @ 2 th. per dent—either 40 or 50 th. per inch.

571 threads in warp.

14 ¼" width at reed in #20 reed **or** 11½" = width at reed in #25 reed.

THREADING PLAN:

A—E = 110 th. x 5 repeats = 550 th.

E—F = 21th. x 1 repeats = 21 th.

A—D = 64 th. x 571 thr. ÷ 14 ¼" or ÷ 50 = 11 ½".

Note—To get the special character of this lovely old cloth, **do use a #20 or #25 reed.**

WEAVING PLAN:

A two shuttle weave. Alternate with tabby shots.

Sequence: wheel, small rose, large rose, small rose } repeat as desired ending with wheel

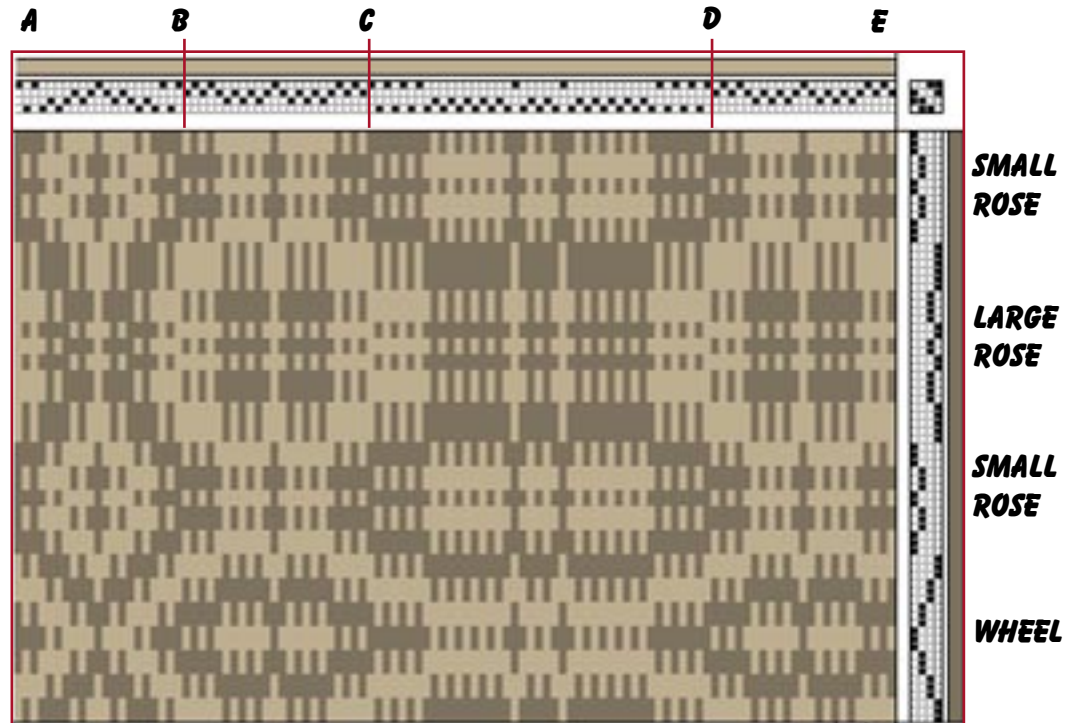
Note: **For Rising Shed.**

Substitute 2-3 for 1-4

Substitute 1-2 for 3-4

Substitute 1-4 for 2-3

Substitute 3-4 for 1-2



Instead of weaving this as a rose pattern, it may be woven "on the diagonal" with "stars" instead of roses.

LINEN WEAVES

BRONSON LACE WEAVE

WARP PLAN:

40/2 linen—white
or natural for warp
20/2 linen—white or
natural for weft.

*If white is used for warp,
try pastels for weft.
40/2 may also be used
as weft.*

#15 dent reed at 2 th
per dent = 30 th. per
inch.
394 threads in warp 13"
width in reed.

THREADING PLAN:

A—B (plain weave) =
10 th. x 3 repeats = 30
th.

B—C = (lace—"rose")
= 40 th. x 1 repeats =
40 th.

C—D = (plain weave) = 8 th. x 2 repeats = 16 th.

D—E = (lace center) = 10 th. x 3 repeats = 30 th.

C—D = (plain weave) = 8 th. x 2 repeats = 16 th.

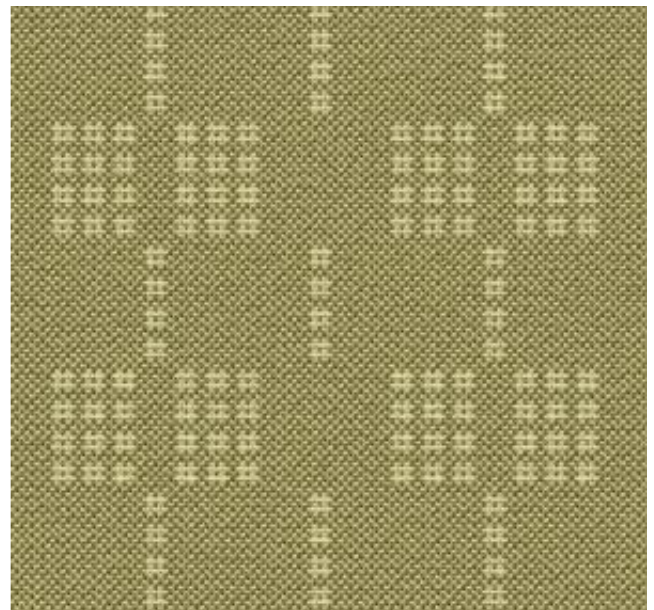
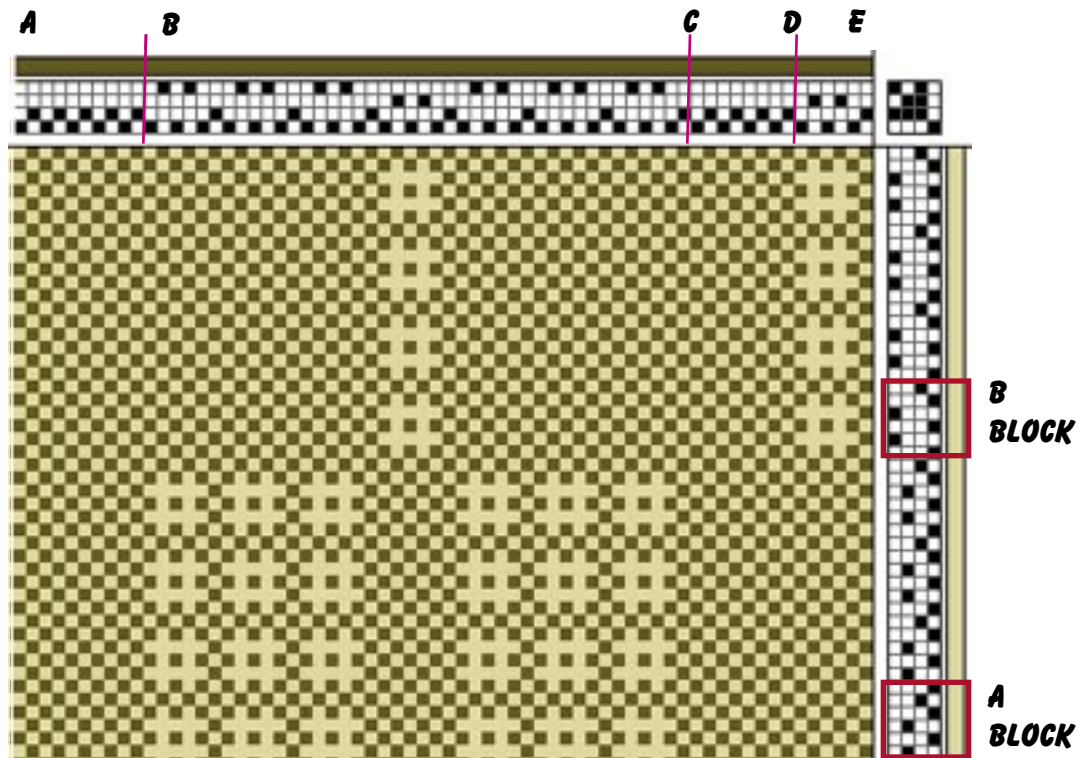
B—C = (lace—"rose") = 40 th. x 1 repeats = 40 th.

A—B (plain weave) = 10 th. x 3 repeats = 30 th.

394 th. divided by 30 = 13 2/15 " wide.

Weave "as drawn in" and square **all** blocks, includ-
ing the **plain weave** blocks. For hems weave enough
tabby for turn under at beginning and end.

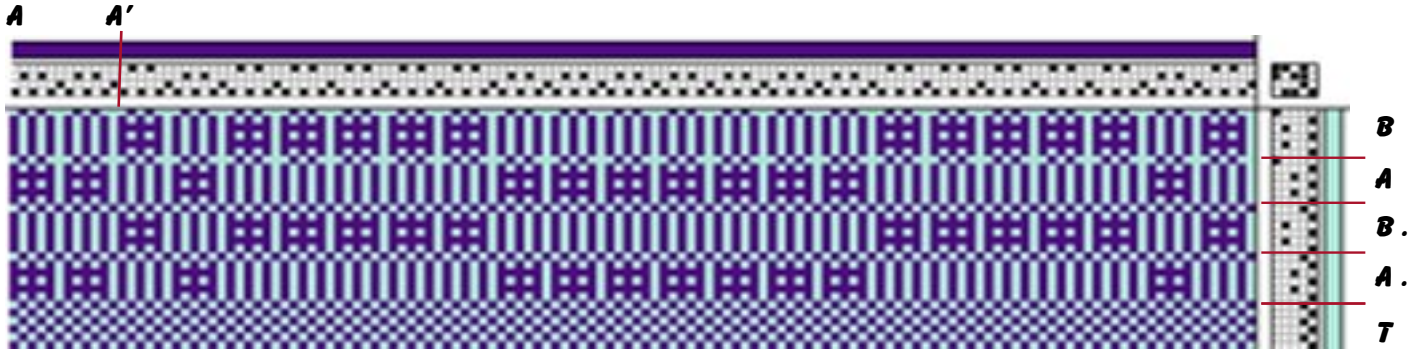
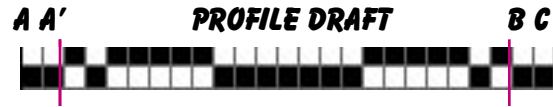
INDIANA HEDGE ROSE



LINEN WEAVES

4-SHAFT LACE WEAVE

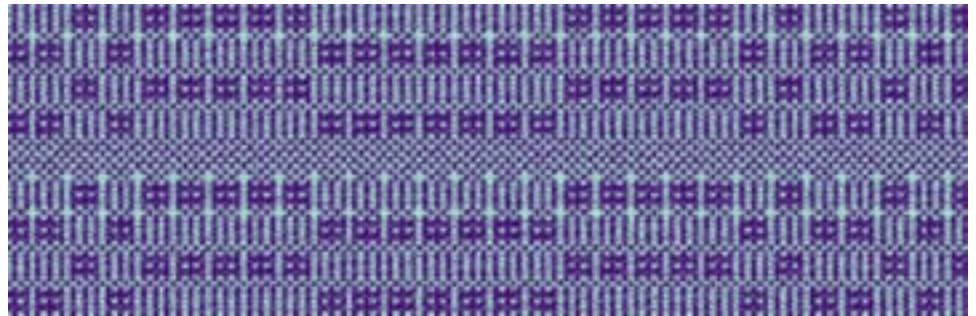
PATTERN—"DOTTED SWISS OR LACE"



WARP PLAN:

35/3 or 35/2 white mercerized linen for warp & weft
or 40/2 white linen warp and 20/1 white linen weft.

#15 reed threaded @ 2 th. per dent. Either 426 th. in warp = 14 1/5" width of warp in reed or 288 th. in warp = 9 1/2" width of warp in reed (just for samples.)



THREADING PLAN:

A—B = 23 units of 6 threads each = 138 th. x 3 repeats = 414 th.

A—A' = 2 units of 6 threads each = 12 th. x 1 repeats = 12 th. (426 ÷ 30 = 14 1/5" width)

or

A—B = 23 units of 6 threads each = 138 th. x 2 repeats = 276 th.

A—A' = 2 units of 6 threads each = 12 th. x 1 repeats = 12 th. (288 ÷ 30 = 9 1/2" + width)

WEAVING PLAN:

A one shuttle weave.

1. Tabby Weaving: This may be used for hems & all plain weaving.

1, 2- 3- 4 (**T**)

2. Tabby with "dotted Swiss" effect. This is to be used in combination with pattern woven with "dots". Here there are 6 shots needed to space the dots properly.

1, 2-3-4, 1, 2-3-4, 1

Pattern Weaving: Follow pattern on diagonal and square the blocks.

1. Pattern without dots (**A OR B**)

Block A = 1, 1-3, 1, 1-3, 1, 2-3-4

Block B = 1, 1-4, 1, 1-4, 1, 2-3-4

2. Pattern with "dotted Swiss" effect (**A. OR B.**)

Block A = 1, 1-3, 1, 1-3, 1, 3-4

Block B = 1, 1-4, 1, 1-4, 1, 3-4

LINEN WEAVES

DOUBLE FACED TWILL

WARP PLAN:

40/2 white linen may be used for both warp and weft.

16/1 or 20/1 white (or pastels) is **preferable** for weft.

#20 reed threaded @ 2 th. per dent = 40 th per inch.

576 th. = No. of threads in warp

14 2/5" width of warp in reed

THREADING PLAN:

A—B (checkerboard border) = 20 th x 2 repeats = 40 th.

B—D (main pattern) = 32 th. x 15 repeats = 480 th.

B—C (balancer) = 16 th. x 1 repeats = 16 th.

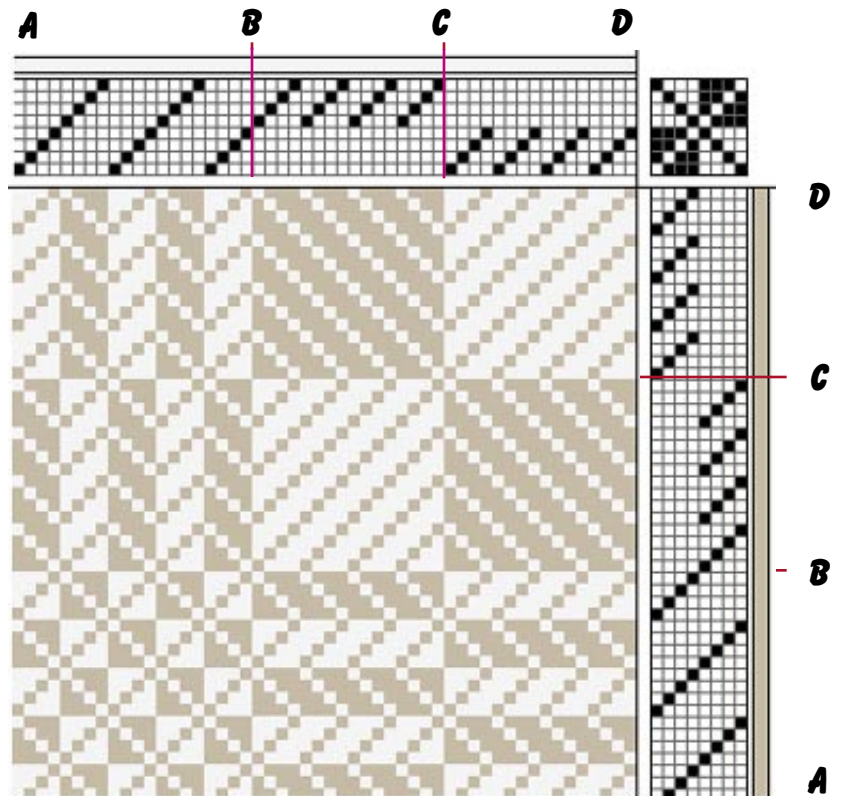
A—B (border) = 20 th. x 2 repeats = 40 th.
(576 ÷ 40 = 14 2/5" + width)

WEAVING PLAN:

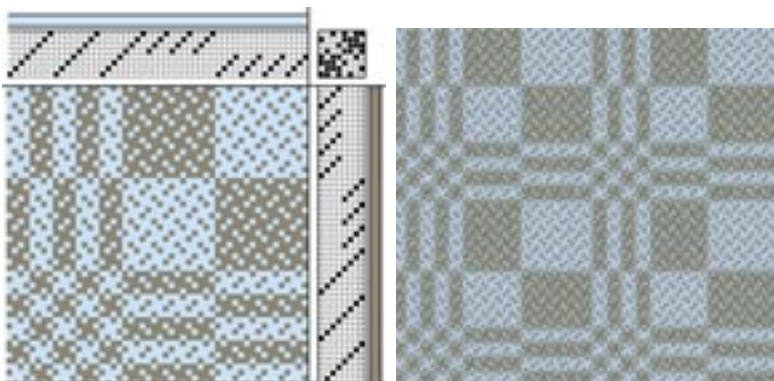
This is a one-shuttle with no tabby. Weave "as drawn in" and square each block. This design has a "checkerboard" frame all around it so be sure to weave it at both ends.

The threading and the treadling are the same for both designs, only the tie up changes.

BASIC BLOCKS OF DOUBLE FACED TWILL



DOUBLE-FACED TWILL (DIAPER TWILL)



**SIMPLE "DAMASK" (FALSE DAMASK)
TRUE DAMASK NEEDS 5-THREAD BLOCK**

LINEN WEAVES

DOUBLE FACED TWILL & "DAMASK"

"WHIG ROSE VARIANT"

WARP PLAN:

40/2 linen — white for warp

10/1, 14/1 or 20/1 (white or colors for weft).

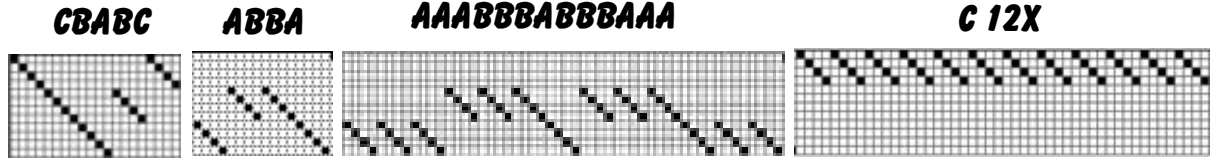
#20 reed

threaded @ 2

th. per dent

= 40 th. per

inch.



THREADING PLAN:

C (12,11,10,9) B (8.7.6.5) A (4,3,2,1)

B C = 20 th.

ABBA = 32 th.

AAABBBABBBAAA = 52

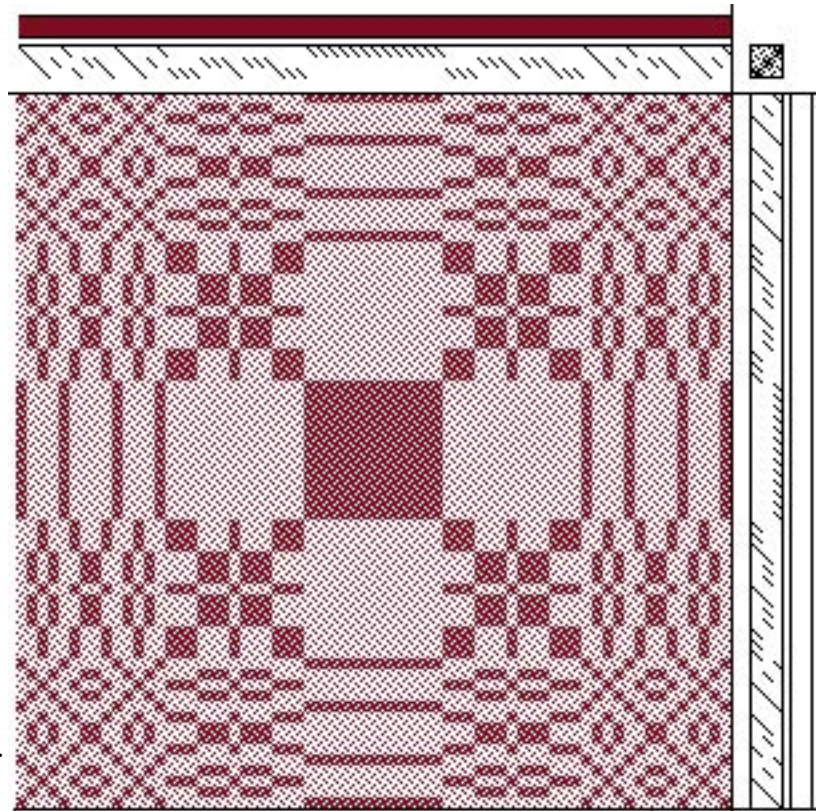
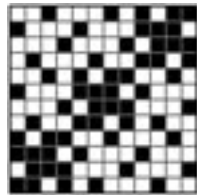
C 13 repeats = 52 th.

AAABBBABBBAAA = 52

ABBA = 32 th.

C (12,11,10,9) B (8.7.6.5) A (4,3,2,1)

B C = 20 th.



WEAVING PLAN:

A one-shuttle weave.

May be woven on diagonal, squaring blocks, or in whig rose fashion. Use profile to give you order and size of blocks.

The threading and the treadling order is the same for both designs, only the tie up changes.

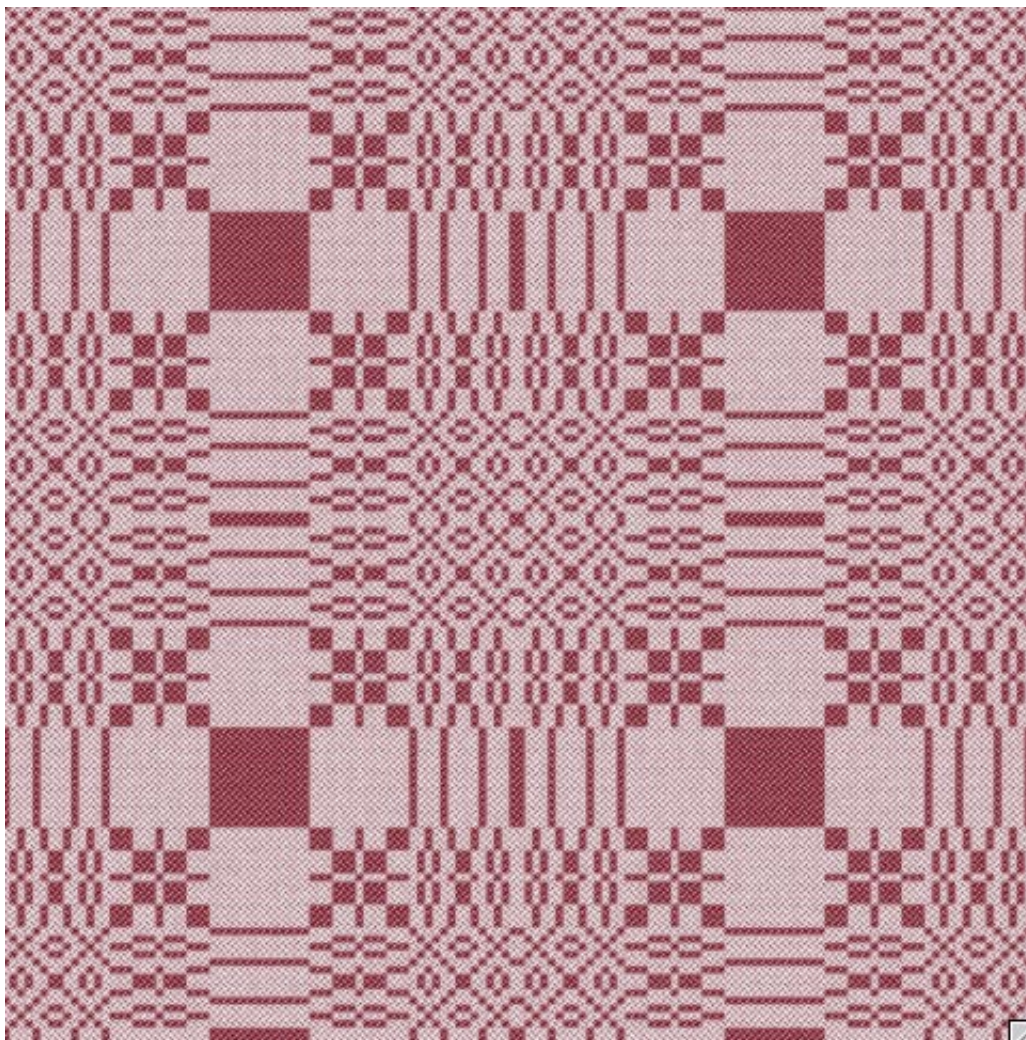
In the original worksheets, the order of the treadling was changed for the "damask"

design from 1-2-3-4 to 1-3-2-4, from 5-6-7-8 to 5-7-6-8 and from 9-10-11-12 to 9-11-10-12 using the same tie up as used for the "twill."

FOUR THREAD "DAMASK" (FALSE DAMASK) ON 12 SHAFTS AS SEEN IN PROFILE DRAFT

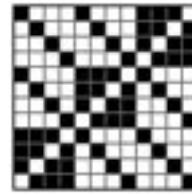
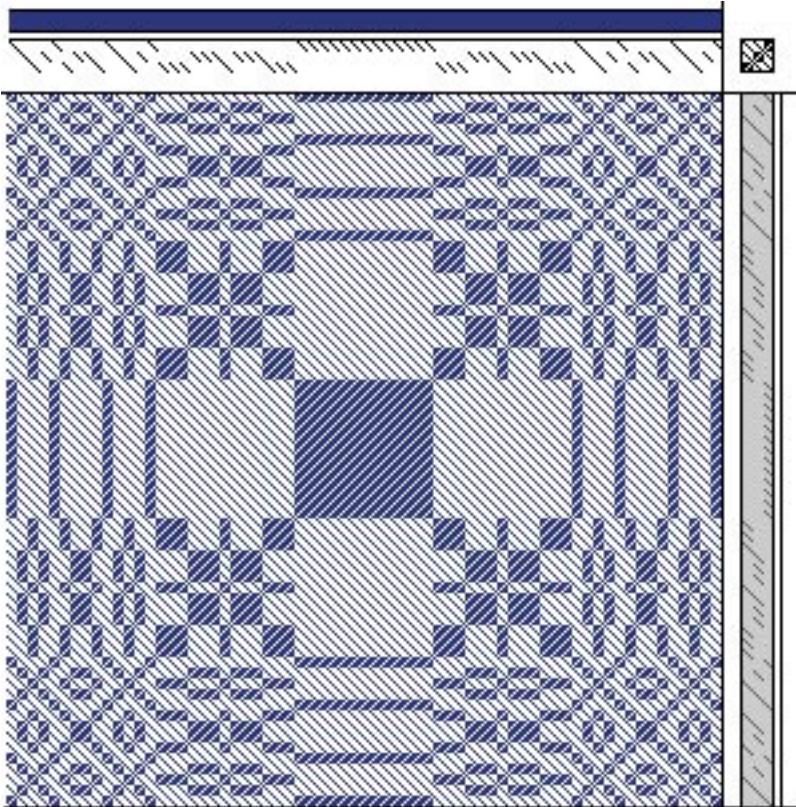
THREADING IS THE SAME FOR FALSE DAMASK AS FOR DIAPER TWILL

LINEN WEAVES



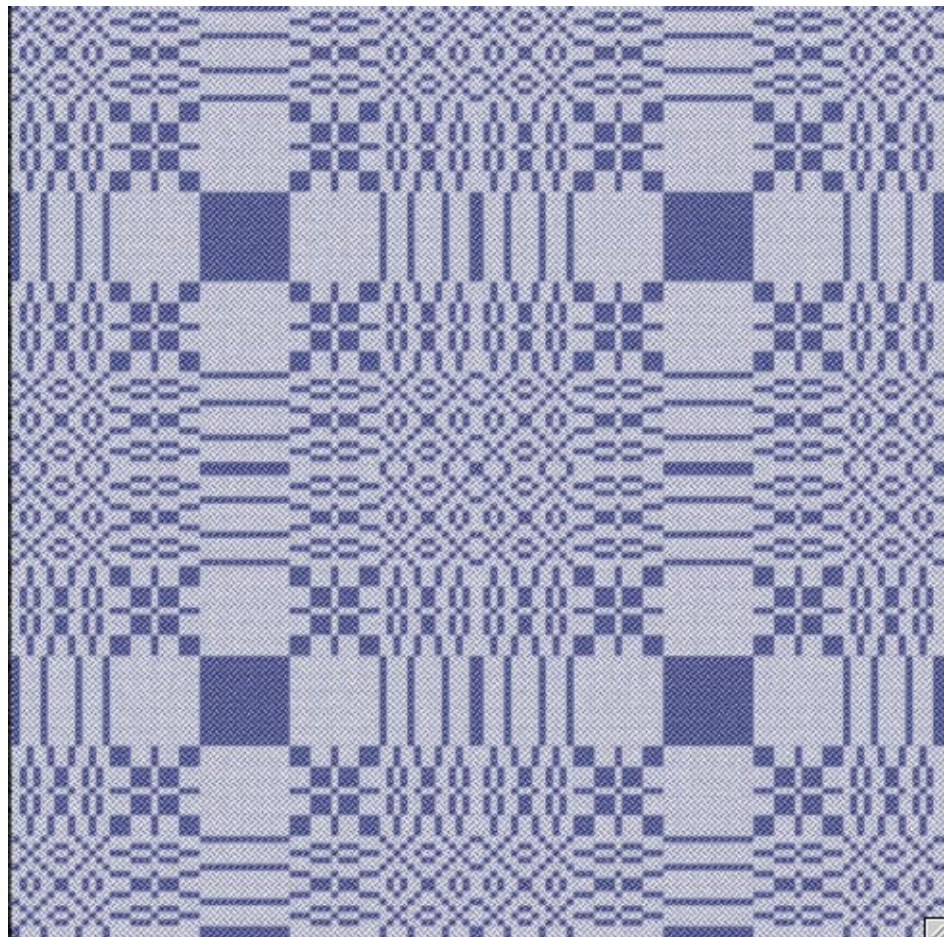
***SIMULATION OF WEAVING OF "FALSE DAMASK" SHOWN IN DRAWDOWN ON
PAGE 13—SAME THREADING AS DIAPER TWILL***

LINEN WEAVES



***DIAPER TWILL FOR
12 SHAFTS***

PROFILE DRAFT ON PAGE 15



LINEN WEAVES

CRACKLE WEAVE

PATTERN—"THE PINES"

BY M. BERGMAN

WARP PLAN:

40/3 linen or 20/1 Natural

Linen,

for both warp & tabby.

Pattern Weft = 10/2 linen—

½ lb. dark green and/or

½ lb. dark brown

#12 reed threaded at 2
threads per dent

(24 th. per inch)

323 = number of threads in
warp.

13 ½" = width of warp in
reed.

10/1, 14/1 or 20/1 (white
or colors for weft.

#20 reed threaded @ 2
th. per dent

= 40 th. per inch.

THREADING PLAN:

A—B = 73 threads x 1 = 73
th..

B—F = "repeat"—102 th. x1 = 102 th.

B—E = "**BALANCE**" —75 th x 1 = 75 th.

B—A = 73 threads x 1 repeat = 73 th.

323 th. ÷ 24 = 13 11/24" width of warp

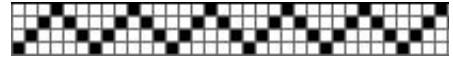
WEAVING PLAN:

Tabbies are 1 & 3 and 2 & 4
and **alternate with pattern
weft**. In Crackle Weave
there are no long skips as
in overshot. Each pattern
weft skips over 3 warp
threads and under the 4th
(the tie down thread.) The
order in which the design
is woven is given in outline
beside the treadling.

TREE TRUNKS



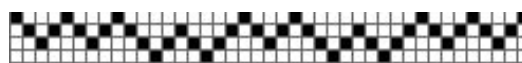
BRANCHES



SMALL SQUARE



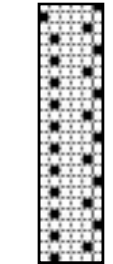
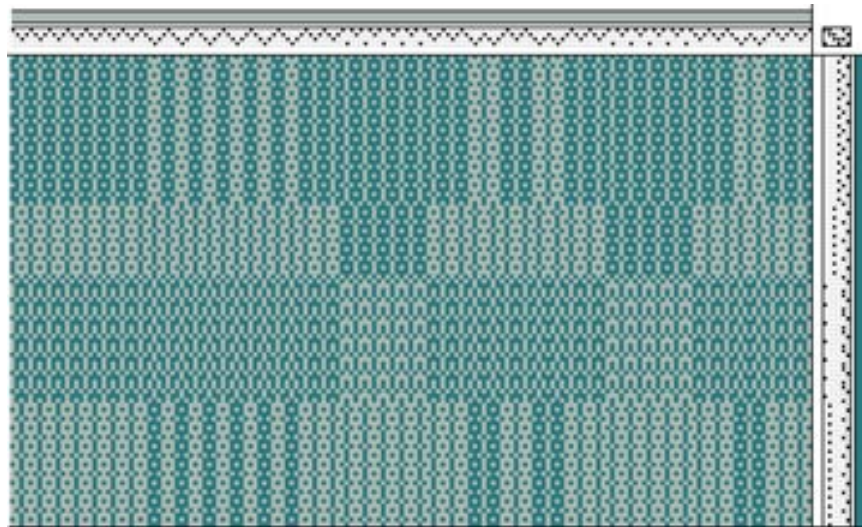
DOUBLE CROSS



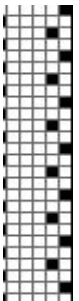
SMALL SQUARE



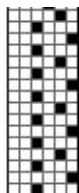
SINGLE CROSS



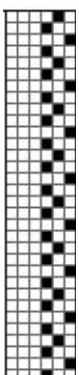
TREE
BRANCHES



SMALL
SQUARE



DOUBLE
CROSS



LINEN WEAVES

FOUR SHAFT LENO WEAVE

WARP PLAN:

16/3 cotton—natural for warp

For weft see weaving plan

#12 reed (It is essential to use a #12 Reed!!)

264 threads in warp—4 ths. in every other dent

11" width of warp.

THREADING PLAN:

Thread each th. one per heddle.

A—B = 24 threads x 11 repeats—264 th. ÷ 24 (th. per inch) = 11" (width of warp.)

1. Thread this warp as for any twill—1 th. per heddle. As each group of 4 threads is put through the heddles, tie it in a slip knot. Thread & tie 6 groups. Next put the beads on these 6 groups: with right hand, lift the “2” & “3” warp threads in the 1st group of 4 threads, with left hand grasp “1” & “4” threads in same group. Let “2” & “3” hang over #1 at right, pick up bead in right hand and thread “1” & “4” through the bead, being sure as you replace “2” & “3” in the group that they are **over** “1” & “4”. See diagram above. Then retie group of 4 threads toward you from bead. Put beads on other 5 groups & continue to put a bead on every group of threads across the warp in the same manner. 66 beads are needed.
2. Center the warp in the reed, pulling each group of 4 thds. through a single dent. Skip a dent between each threaded dent. See diagram *.

WEAVING PLAN:

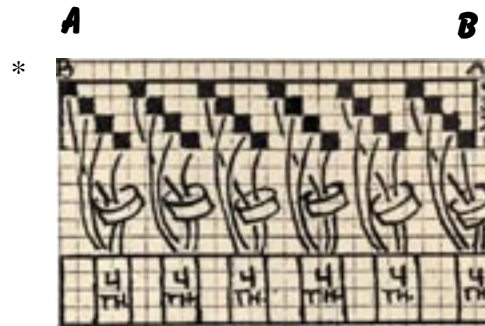
For **weft**: 10/3—demi bleach linen

1. Fringe is good as a finish for this weave.
2. **Tabby**: Alternate **shafts** 1 (which also lifts 4) and 2 & 3.
3. **Leno**: Alternate **shafts** 1 & 4.

Note: A pick up stick may be used to increase the depth of the shed. Use for mats, runners and curtains.

“BEAD-LENO”

BY M. ATWATER FROM LILY BULLETIN



12 REED WITH 4 THDS. IN EVERY OTHER DENT.
1/4" DIAMETER BEADS NEEDED.



**TIE UP FOR
LENO**

LINEN WEAVES

8 SHAFT—BRONSON POINT

WARP PLAN:

50/2 linen — white, for both warp and weft or 40/2

linen — white, for both warp and weft

#20 reed for 50/2 linen = 3 th. per dent or 40/2

linen = 2 th. per dent in #15 reed.

For 50/2 linen
= 394 threads in
warp, 10" wide at
40 th. per inch.

For 40/2 linen =

296 threads, 10" wide at 30 th. per inch.

THREADING PLAN:

For 40/2 linen

A'—A = 2 threads x 1 repeat = 2 threads

A—B = 48 threads x 6 repeats = 288 threads

B—C = 6 threads x 1 repeat = 6 threads

$296 \div 30 = 10"$

For 50/2 linen.

A'—A = 2 threads x 1 repeat = 2 threads

A—B = 48 threads x 6 repeats = 386 threads

B—C = 6 threads x 1 repeat = 6 threads

$394 \div 40 = 10"$ (-)

WEAVING PLAN:

Use **one shuttle only**.

Tabby - **A** and **B** } for hems.

Pattern = The following are pattern treadles } 1 & 2,

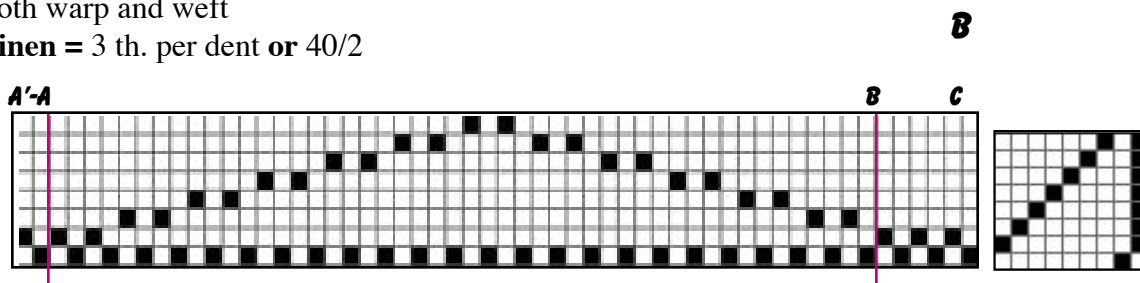
1 & 4, 1 & 5, 1 & 6, 1 & 7, 1 & 8. **More than two shafts may be used, see note ***

For all pattern sots use tabby **A** in alternation with the pattern combinations. Try out first the basic, 1-shaft combinations of which there are **7 pattern blocks in all**.

For each pattern block 4 shots are needed.

1. Patt. 1 & 2, **A**, 1 & 2, **A**.
2. Patt. 1 & 3, **A**, 1 & 3, **A**.
3. Patt. 1 & 4, **A**, 1 & 4, **A**.
4. Patt. 1 & 5, **A**, 1 & 5, **A**.
5. Patt. 1 & 6, **A**, 1 & 6, **A**.
6. Patt. 1 & 7, **A**, 1 & 7, **A**.
7. Patt. 1 & 8, **A**, 1 & 8, **A**.

PATTERN—"AS YOU LIKE IT"



Each unit shown in the profile = 4 threads, with threads 1 & 3 on shaft 1 and **both** other threads on any **one** if te=he other 7 pattern shafts as in the threading draft.

USE TABBY WITH TREADLING

*Note: Combinations of **all even or all odd** pattern shafts may be made.
Woven as above with 4 shots.

Pattern Suggestions: 1. Pattern block #1, 2. = #2 etc. for weaving.

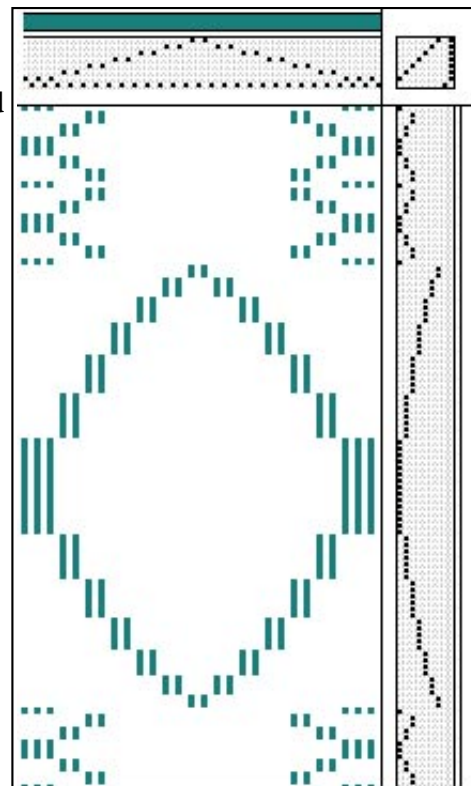
1. 1,2,3,2,1 } 1x each; next weave 20 shots of plain tabby; 8,7,6,7,8 } 1x each; repeat 20 tabby sots.

Repeat as desired.

2. 1,2,1 then 232, then 343, then 454, then 565, then 676, then 787 & reverse.

3. for a row of trees, weave the following: 1-4-6, 1-6, 1-7 } 4 shots, see above at *

tabby **ABA**, 1-7, **ABA**, 1-7, 1-6-4-2, 1-3-5-7, 1-6-4, 1-5-7, 1-6, 1-7.



LINEN WEAVES

8 SHAFT NOVELTY TWILL

WARP PLAN:

20/2 linen—dark green for warp & tabby weft.
 For **pattern weft** choose material suitable for mats, screens, upholstery, arons, skirts, etc.
 From such yarns as —homespun wool, heavy linen (red, white or chartreuse or nubby rayon or wool, metallics (use lightly)
 #20 reed threaded @ 1 th. per dent.
 239 = Number of threads in warp
 12" = width of warp in reed.

THREADING PLAN:

For 40/2 linen

A—B = 14 threads x 17 repeats = 238 threads

B—C = 1 thread x 1 repeat = 1 threads

239

WEAVING PLAN:

Use 2 shuttles—tabby & patt. weft.

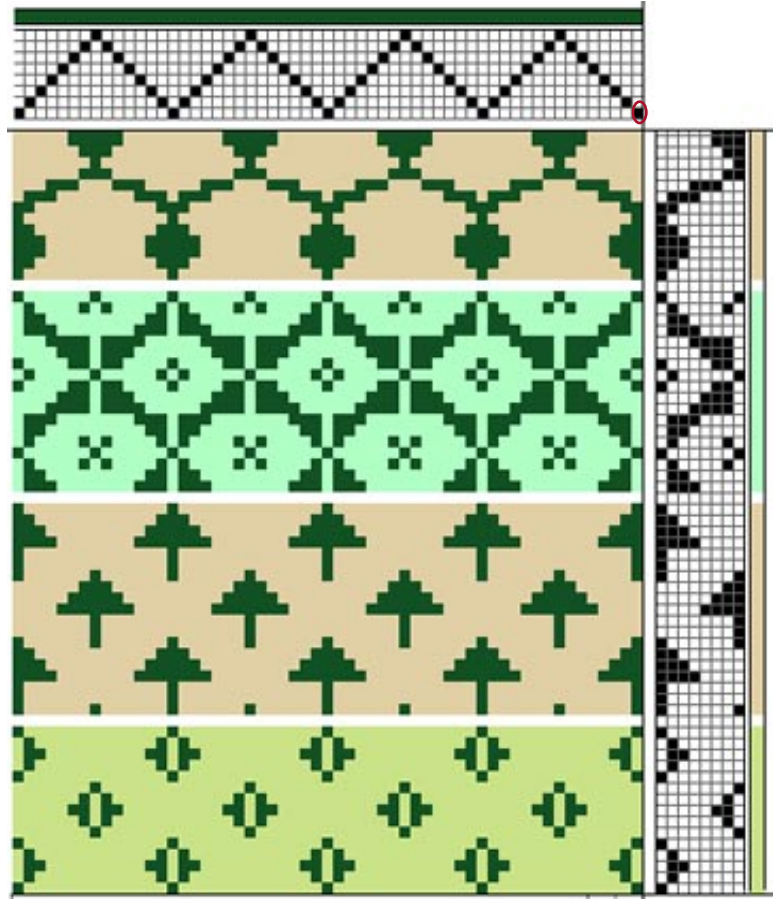
1. For tabby—yarn like warp. **Alternate** tabby A & B.



"SWEDISH UPHOLSTERY"

A

B

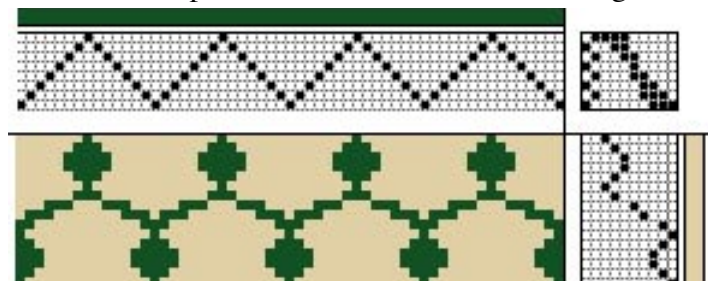


2. For Pattern—alternate pattern & tabby.

3. Pattern suggestions: Try out twill in pairs (1-3, 2-3, 3-4 etc.) and in triples (1-2-3, 2-3-4 etc.)

4. Make your own all over designs like **A** & **B** (below.)
 Use the treadlings shown on previous page. Note that there is a common treadle for (1-8) for **C** and **D** Designs.

Note that a liftplan has been used to show the figured



patterns. Compare it with the tie up and treadling.