

Exchanging ideas and sharing knowledge

The Messenger

WEAVING INDIANA



Next meeting October 17, 2009

From 9:30 AM to 1 PM at the Fishers Library, 9 Municipal Drive

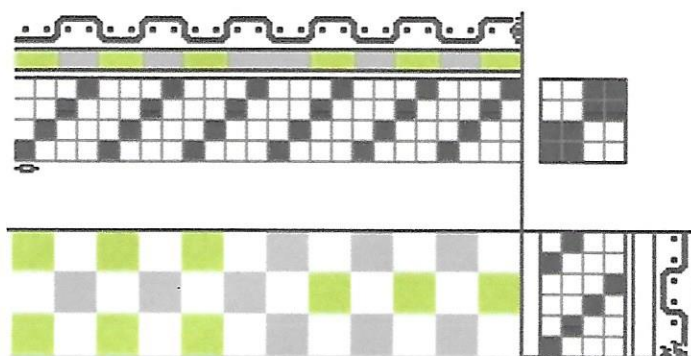


Equipment and accessories

Bring any equipment and/or accessories that you would like identified or equipment show and tell that would be of interest to the weavers. Show how you use certain tools to simplify your warping and weaving chores.

A collection of weaving equipment, looms, wheels, and tools will be shown to trace the history of textile making over the last few hundred years. You might use this showing to identify looms or equipment that you own or wish to acquire.

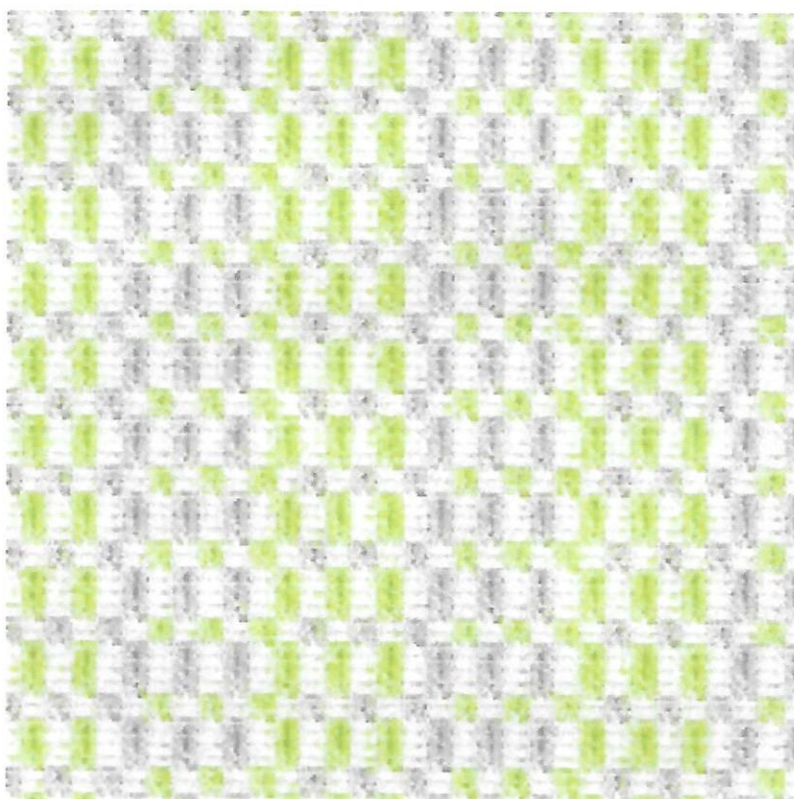
October Sample 4

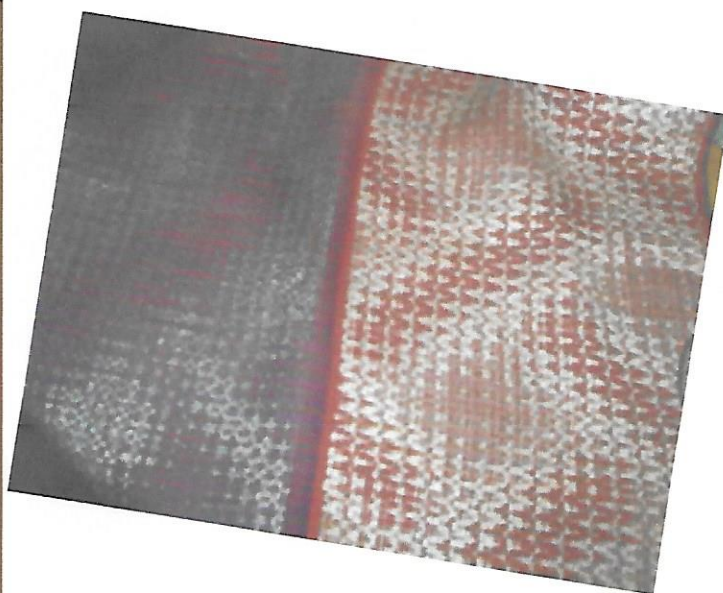


This pattern is beautiful in its simplicity. A four harness weave with groups of two colors that repeat 3 times and then reverse to repeat 3 times.

The weft color is a one shuttle pattern that can be woven as desired. If the sample shown here is used, the green and grey blocks will repeat to give a longer column alternating with a single group which repeats only once.

Try some combinations of your own and use different color schemes.





Photos of Bonnie Innouye's work shown at the Weaving Indiana meeting on September 25th held at the Old Country Buffet in Camel.

Messenger deadline is 25th of each month prior to the month of publication



Carrie May using the computer assisted AVL Home Loom

Bonnie Innouye displaying her “advancing twills” and networking products





Tina Hilton weaving on her
Macomber portable loom



Alison Forsythe working on her
Schacht Baby Wolf with other looms
in the background

Results of the samples woven in the
workshop



Nominations will be taken from the floor for Workshop Convener.



Tabby Tree Weaver

Yarns, Fiber, Looms, Spinning wheels
Books and Supplies for fiber artists

Dealer for
Ashford, Glimakra, Louët, Schacht

And recently added
Leclerc Looms & Equipment

Hours: 10:00-5:00 Wed. through Sat.
Tues. by appointment

107 E. Main Street, Arcadia, IN 46030
317-984-5475~tabbytreeweaver.com

President	Alison Forsythe
Vice President	Nancy Berry
Secretary	Nina Kennedy
Treasurer	Marianne Fitzpatrick

Newsletter,
Membership

Research

WebMaster

Login Password

Program Committee

Kris Seel, Joan Leon, Sue Parker Bassett



WEAVING INDIANA